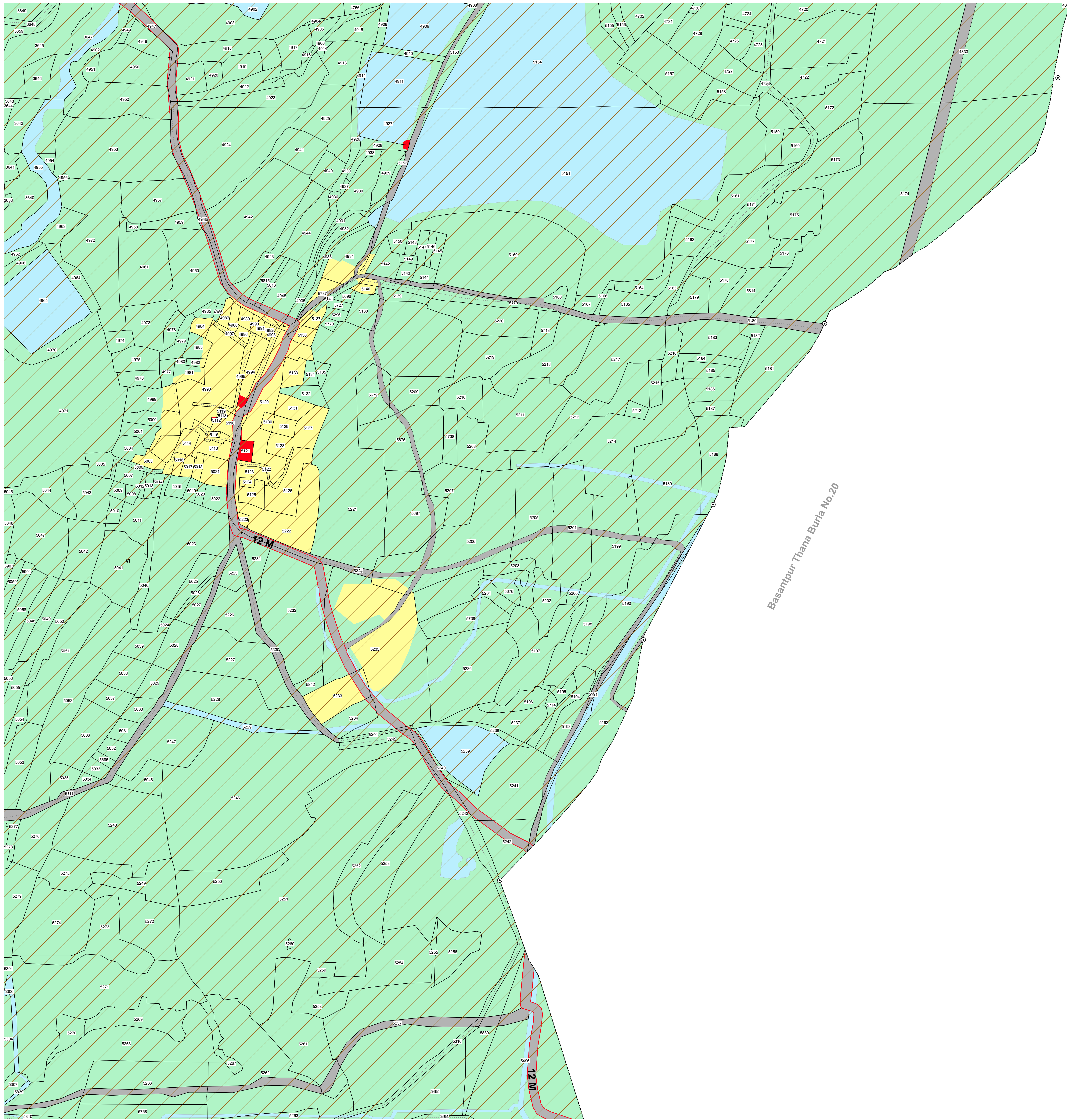


83°52'56"E 83°53'0"E 83°53'4"E 83°53'10"E 83°53'16"E 83°53'20"E 83°53'26"E 83°53'30"E 83°53'36"E 83°53'40"E 83°53'46"E 83°53'50"E 83°53'56"E 83°54'0"E

Sheet No.8

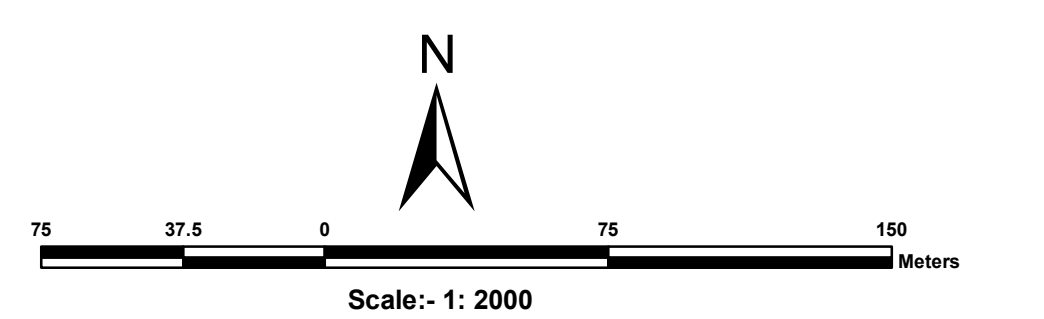


Sheet No.4

Sheet No.6

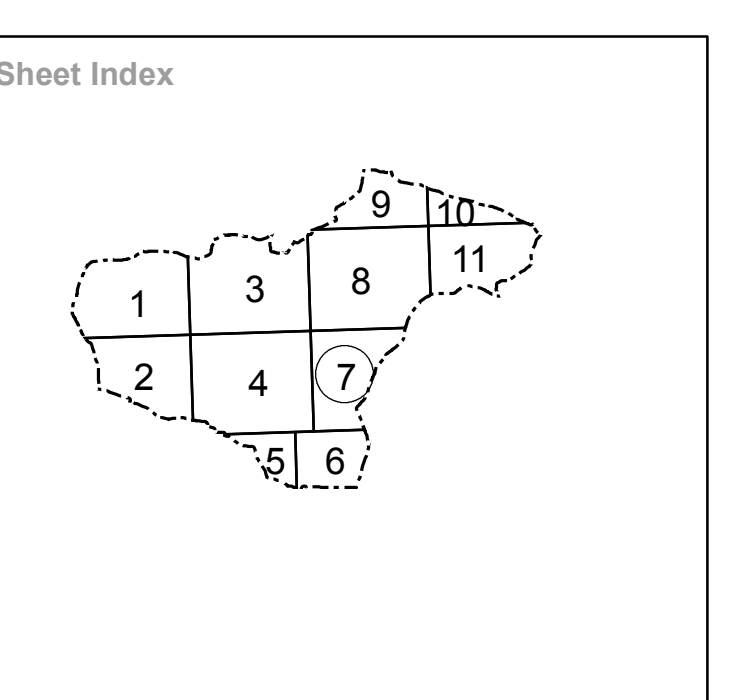
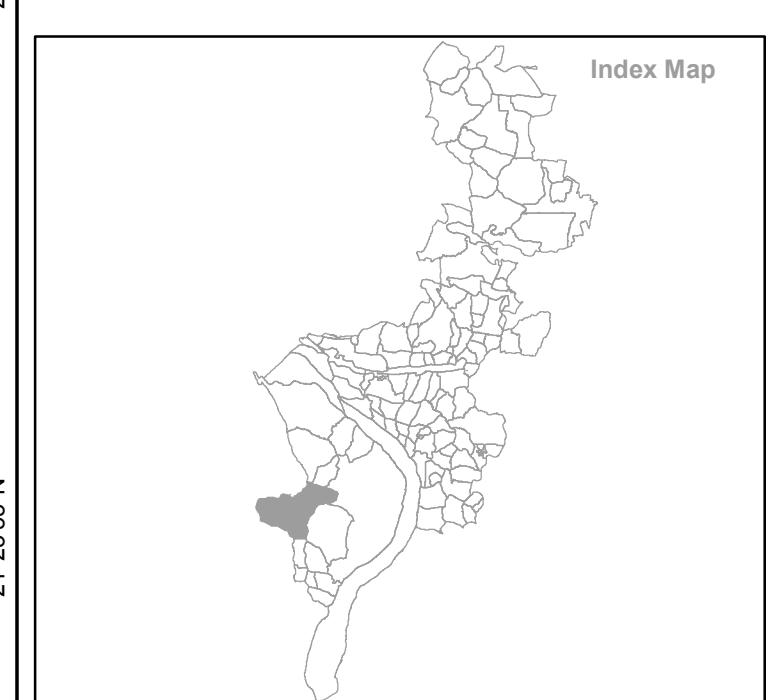
83°53'0"E 83°53'4"E 83°53'10"E 83°53'16"E 83°53'20"E 83°53'26"E 83°53'30"E 83°53'36"E 83°53'40"E 83°53'46"E 83°53'50"E 83°53'56"E 83°54'0"E

PROPOSED LANDUSE MAP
Sambalpur Development Authority (SDA)
 Mouza: Kalamati P.S. : Burla No.11 (7/11)



LEGEND

- Residential Use Zone
- Retail Business Neighbourhood Shopping Use Zone
- Wholesale Warehousing and Storage Use Zone
- Industrial (Light Manufacturing Industry, Service Industry and Medium Industry) Use Zone
- Public Semi Public Use Zone
- Utilities and Services
- Recreation (and open space) Use Zone
- Transportation Use Zone
- Special Area Use Zone
- Agricultural (and Allied) Use Zone
- Water bodies Use Zone
- Area : water supply scheme to be introduced in future
- Land for Rehabilitation of Slum Dwellers existing on Naia Bank
- Old builtup area (Buildings of historical or architectural or archaeological importance described in the draft C.D.P.Report.)
- Existing Road
- Proposed Road
- Proposed Bridge over River Mahanadi
- Fly Over Bridge
- Railway Line / Railway Station (RS)
- Existing Water Supply Rising main 1000 mm
- Existing Water Supply Main distribution line 300 mm
- Natural Drainage Channel / Waste Water with realignment (Dhobjore and Tangra Nalas in dotted line - 3 feet deep stone pitching inside and 15 feet wide stone walk way with 50 feet c to c trees / Street lights in developed Urban area)
- Comprehensive Development Plan (SDA) Boundary
- Municipal Boundary
- Mouza Boundary
- Zone Boundary
- Ward Boundary
- Revenue Settlement Boundary
- Village Road
- Plot Boundary
- Dosimali
- Trisimali
- Mustakichand
- Railway Pillar/Other Pillar



Source Database Used :
 Data Used For Preparing Existing Landuse
 Satellite Data : World View-1 (PAN)
 Cadastral Data : Year-1970-71
 Ground Truthing : August 2010

Village Name :Kalamati
 Sheet No.7
 Tahasil Name : Sambalpur

Guideline : Urban GIS Database Development for
 CDP/ Master Plan Preparation
 Directorate of Town Planning
 Deptt. of Housing & Urban Development
 Govt. of Orissa

Prepared by :
**Gujarat Industrial and
 Technical Consultancy
 Organisation, Ahmedabad**
**Sambalpur Development
 Authority, Sambalpur**