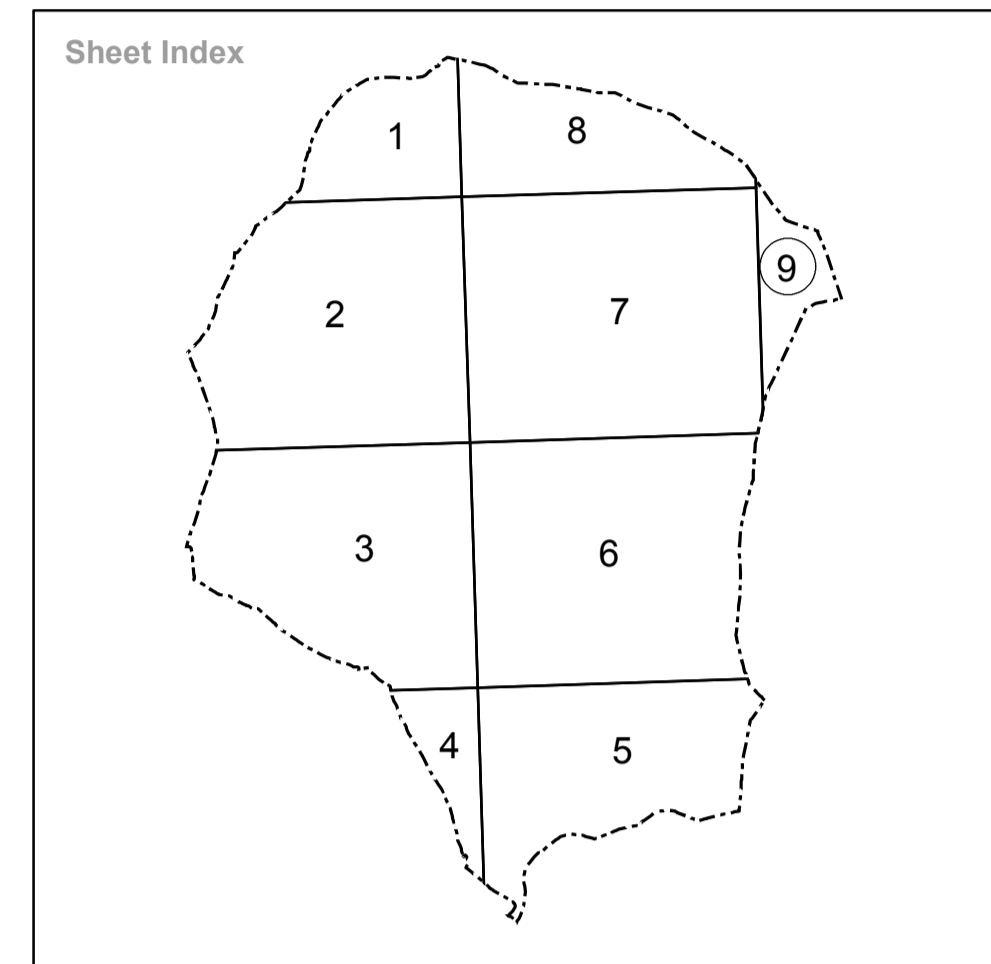
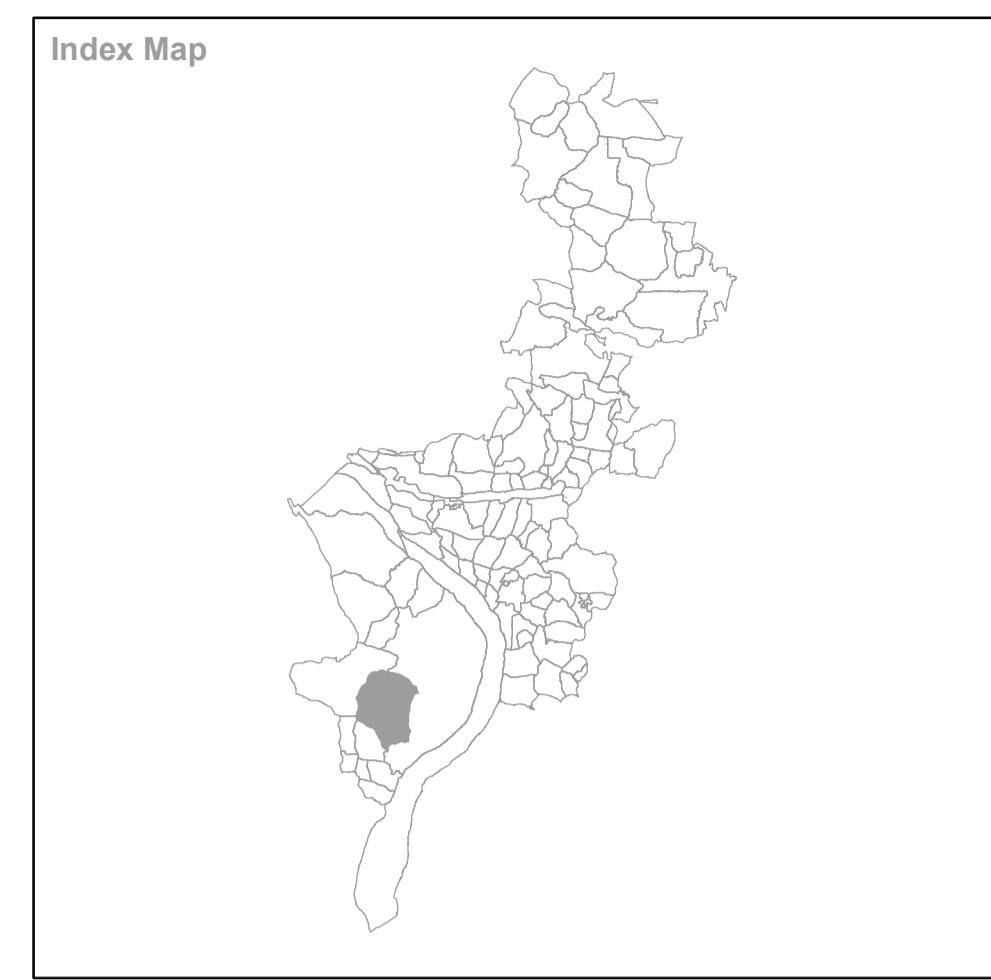
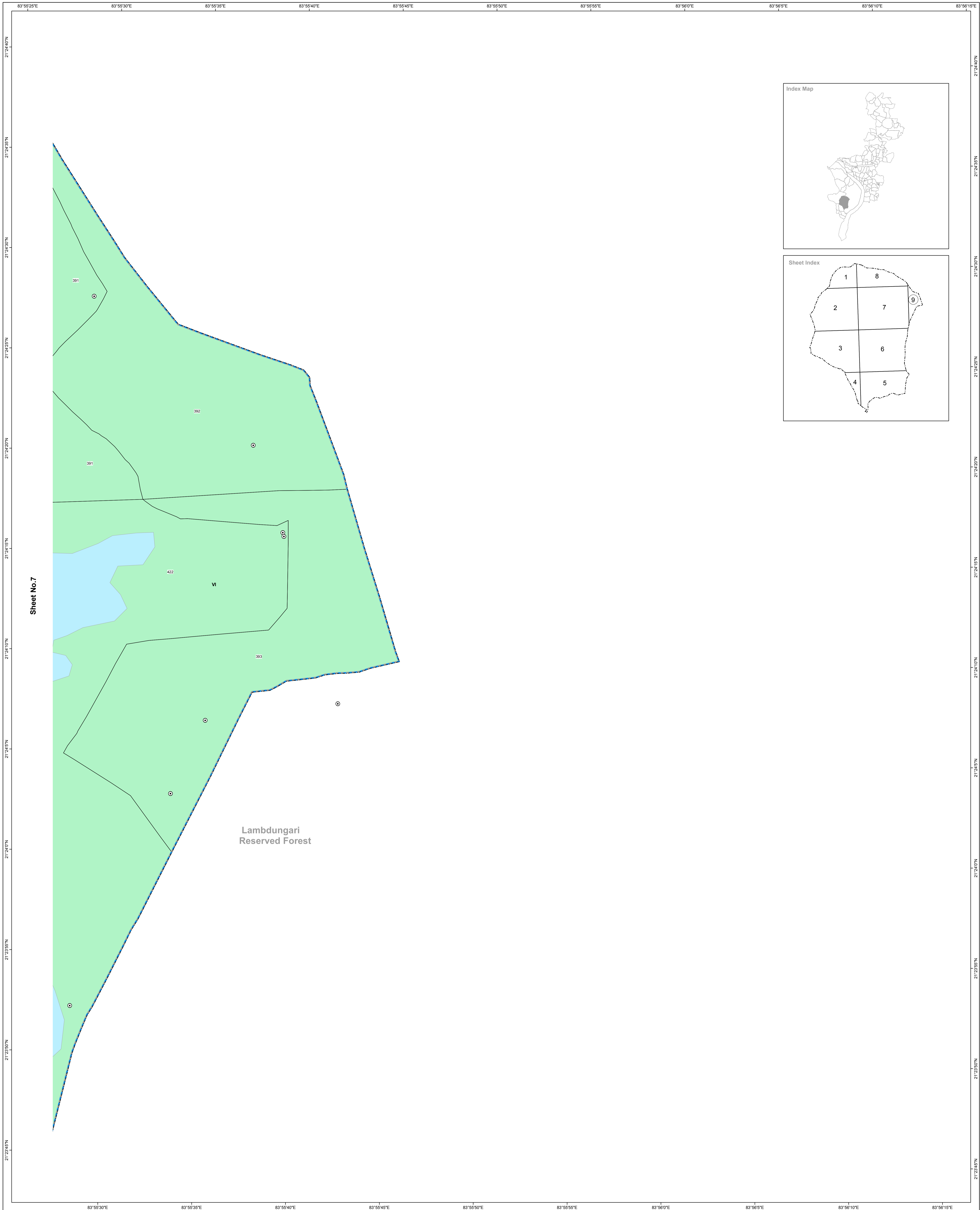
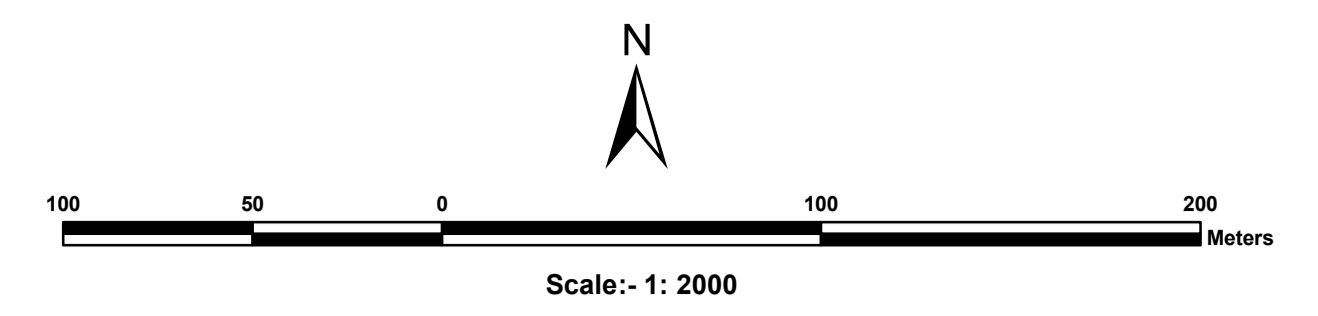


# PROPOSED LANDUSE MAP

## Sambalpur Development Authority (SDA)

Mouza: Basantpur; P.S : Burla No.20 (9/9)



<ul style="list-style-type: none"> <li><span style="display: inline-block; width: 15px; height: 10px; background-color: yellow; border: 1px solid black;"></span> Residential Use Zone</li> <li><span style="display: inline-block; width: 15px; height: 10px; background-color: blue; border: 1px solid black;"></span> Retail Business Neighbourhood Shopping Use Zone</li> <li><span style="display: inline-block; width: 15px; height: 10px; background-color: purple; border: 1px solid black;"></span> Wholesale Warehousing and Storage Use Zone</li> <li><span style="display: inline-block; width: 15px; height: 10px; background-color: pink; border: 1px solid black;"></span> Industrial (Light Manufacturing Industry, Service Industry and Medium Industry) Use Zone</li> <li><span style="display: inline-block; width: 15px; height: 10px; background-color: red; border: 1px solid black;"></span> Public Semi Public Use Zone</li> <li><span style="display: inline-block; width: 15px; height: 10px; background-color: brown; border: 1px solid black;"></span> Utilities and Services</li> <li><span style="display: inline-block; width: 15px; height: 10px; background-color: green; border: 1px solid black;"></span> Recreation (and open space) Use Zone</li> <li><span style="display: inline-block; width: 15px; height: 10px; background-color: grey; border: 1px solid black;"></span> Transportation Use Zone</li> <li><span style="display: inline-block; width: 15px; height: 10px; background-color: orange; border: 1px solid black;"></span> Special Area Use Zone</li> </ul>	<ul style="list-style-type: none"> <li><span style="display: inline-block; width: 15px; height: 10px; background-color: lightgreen; border: 1px solid black;"></span> Agricultural (and Allied) Use Zone</li> <li><span style="display: inline-block; width: 15px; height: 10px; background-color: lightblue; border: 1px solid black;"></span> Water bodies Use Zone</li> <li><span style="display: inline-block; width: 15px; height: 10px; border: 1px dashed red;"></span> Area : water supply scheme to be introduced in future</li> <li><span style="display: inline-block; width: 15px; height: 10px; border: 1px dashed pink;"></span> Land for Rehabilitation of Slum Dwellers existing on Nala Bank</li> <li><span style="display: inline-block; width: 15px; height: 10px; border: 1px solid pink;"></span> Old builtup area ( Buildings of historical or architectural or archaeological importance described in the draft C.D.P.Report. )</li> <li><span style="display: inline-block; width: 15px; height: 10px; border: 1px solid black;"></span> Existing Road</li> <li><span style="display: inline-block; width: 15px; height: 10px; border: 1px solid red;"></span> Proposed Road</li> <li><span style="display: inline-block; width: 15px; height: 10px; border-bottom: 1px dashed black;"></span> Proposed Bridge over River Mahanadi</li> <li><span style="display: inline-block; width: 15px; height: 10px; border-bottom: 1px solid black;"></span> Fly Over Bridge</li> </ul>	<ul style="list-style-type: none"> <li><span style="display: inline-block; width: 15px; height: 10px; border-bottom: 2px solid black;"></span> Railway Line / Railway Station (RS)</li> <li><span style="display: inline-block; width: 15px; height: 10px; border-bottom: 1px solid blue;"></span> Existing Water Supply Rising main 1000 mm</li> <li><span style="display: inline-block; width: 15px; height: 10px; border-bottom: 1px solid cyan;"></span> Existing Water Supply Main distribution line 300 mm</li> <li><span style="display: inline-block; width: 15px; height: 10px; border-bottom: 1px dotted black;"></span> Natural Drainage Channel / Waste Water with realignment ( Dhobijore and Tangra Nalas in dotted line - 3 feet deep stone pitching inside and 15 feet wide stone walk way with 50 feet c to c trees / Street lights in developed Urban area)</li> <li><span style="display: inline-block; width: 15px; height: 10px; border-bottom: 1px solid grey;"></span> Comprehensive Development Plan (SDA) Boundary</li> <li><span style="display: inline-block; width: 15px; height: 10px; border-bottom: 1px dotted black;"></span> Municipal Boundary</li> <li><span style="display: inline-block; width: 15px; height: 10px; border-bottom: 1px dashed black;"></span> Mouza Boundary</li> <li><span style="display: inline-block; width: 15px; height: 10px; border-bottom: 1px dashed blue;"></span> Zone Boundary</li> <li><span style="display: inline-block; width: 15px; height: 10px; border-bottom: 1px solid red;"></span> Ward Boundary</li> <li><span style="display: inline-block; width: 15px; height: 10px; border-bottom: 1px solid black;"></span> Revenue Settlement Boundary</li> </ul>	<ul style="list-style-type: none"> <li><span style="display: inline-block; width: 15px; height: 10px; border-bottom: 1px dotted black;"></span> Village Road</li> <li><span style="display: inline-block; width: 15px; height: 10px; border-bottom: 1px solid black;"></span> Plot Boundary</li> <li><span style="display: inline-block; width: 15px; height: 10px; border: 1px solid black; border-radius: 50%;"></span> Dosimali</li> <li><span style="display: inline-block; width: 15px; height: 10px; border: 1px solid black; border-radius: 50%;"></span> Trisimali</li> <li><span style="display: inline-block; width: 15px; height: 10px; border: 1px solid black; border-radius: 50%;"></span> Mustakilchand</li> <li><span style="display: inline-block; width: 15px; height: 10px; border: 1px solid black; border-radius: 50%;"></span> Railway Pillar/Other Pillar</li> </ul>
--	--	---	---

**Village Name :** Basantpur  
**Sheet No.9**

**Tahasil Name :** Sambalpur

**Source/ Database Used :**  
 Data Used For Preparing Existing Landuse : World View-1 (PAN)  
 Satellite Data : Year-1979-80  
 Cadastral Data : Year-1979-80  
 Ground Truthing : August 2010

**Guideline :**  
 Directorate of Town Planning  
 Deptt. of Housing & Urban Development  
 Govt. of Orissa

**Prepared by :**  
**Gujarat Industrial and Technical Consultancy Organisation, Ahmedabad**

**Sambalpur Development Authority, Sambalpur**